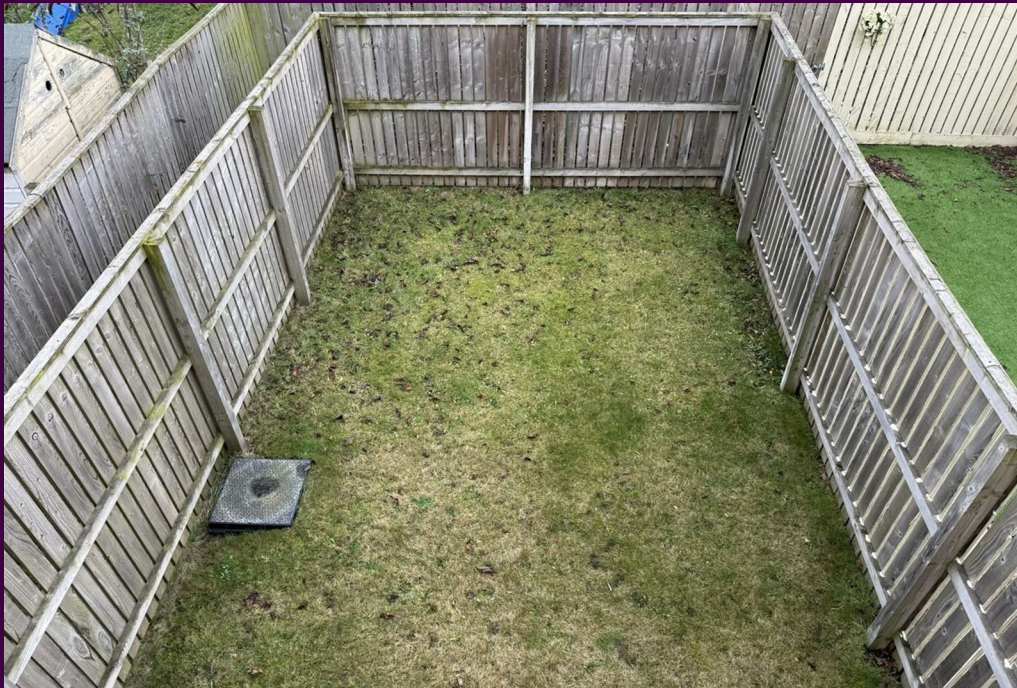


Greatham Avenue,
Whitewater Clade



£135,000

IH INGLEBY HOMES





Attractively priced for an early sale, this modern and well presented, three bedroom end terraced family home situated on the White Water Glade Estate, Stockton-On-Tees.

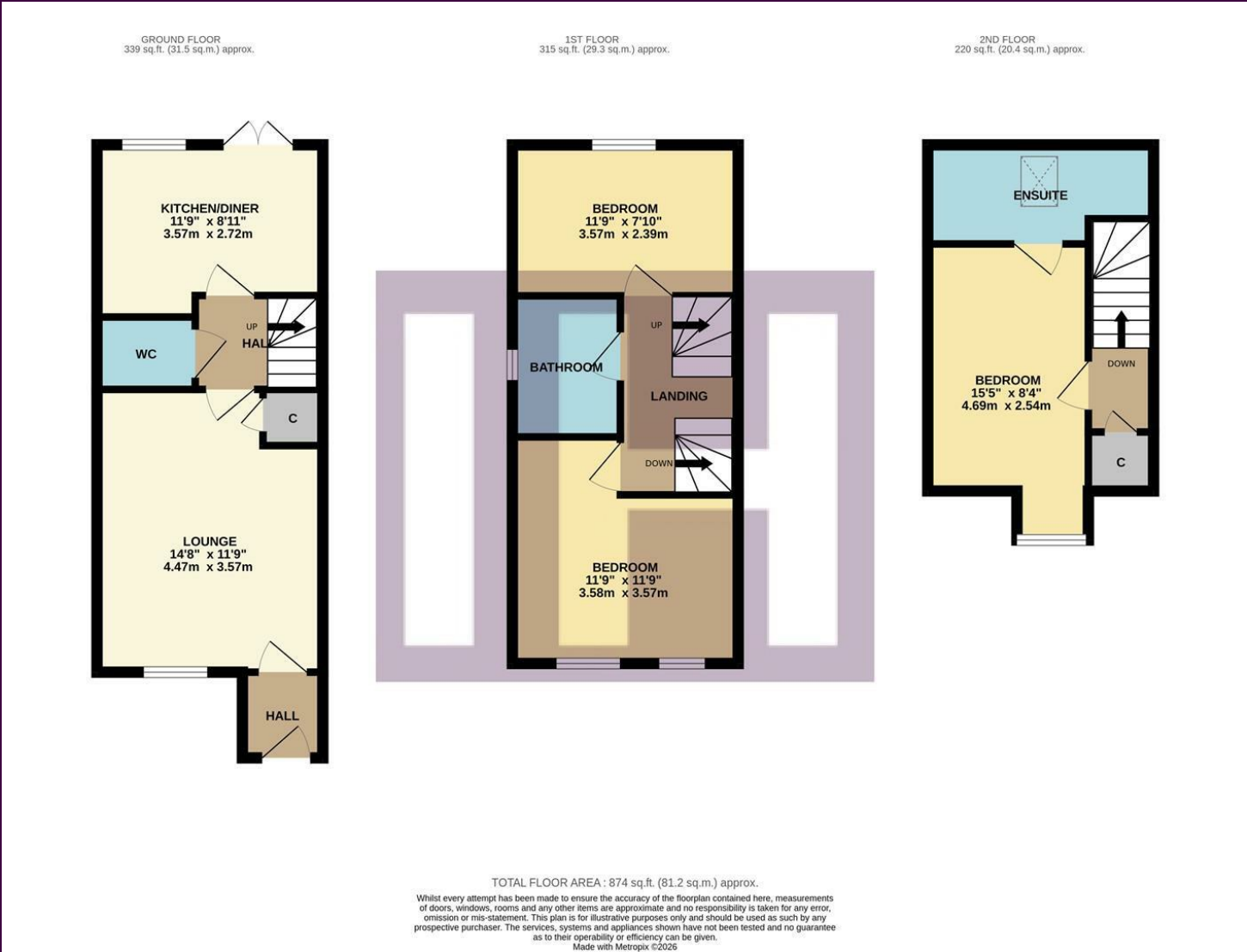
Delivering accommodation over three levels, a particular feature being the three double bedrooms, of which the top floor 'Master' is ensuite.

Enjoying a garage with off-road parking in front, just situated in a block to the side, and a well-tended rear garden, with fantastic amenities nearby.



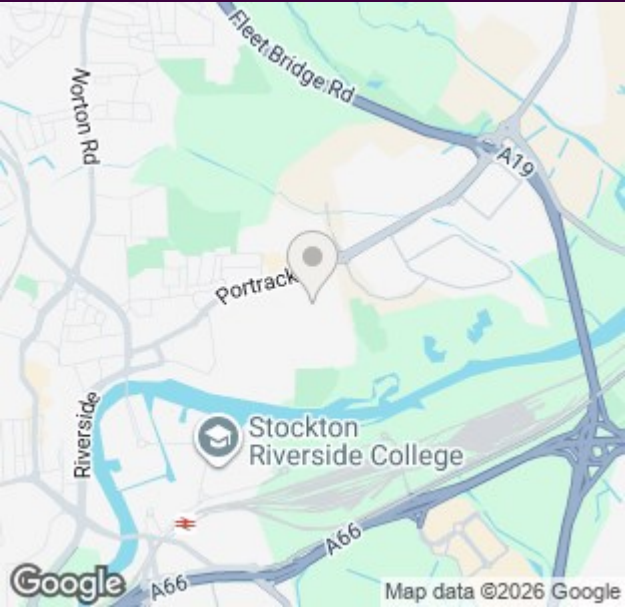
Briefly, the accommodation comprises an entrance hall, lounge inner hall, cloakroom/WC and kitchen/diner to the ground floor. The first floor bringing two of the double bedrooms, along with the family bathroom, with the afore mentioned 'Master' suite occupying the second floor.

The Layout



Energy Efficiency Rating			Environmental Impact (CO ₂) Rating		
	Current	Potential		Current	Potential
Very energy efficient - lower running costs					
(92 plus) A			Very environmentally friendly - lower CO ₂ emissions		
(81-91) B			(92 plus) A		
(69-80) C			(81-91) B		
(55-68) D			(69-80) C		
(39-54) E			(55-68) D		
(21-38) F			(39-54) E		
(1-20) G			(21-38) F		
Not energy efficient - higher running costs			(1-20) G		
England & Wales			England & Wales		
EU Directive 2002/91/EC			EU Directive 2002/91/EC		

The Location



Council Tax Band: C
Tenure: Freehold



- Accommodation over three modern levels
- Attractively priced - early viewing advised
- Three double bedrooms, 'Master' with ensuite
- Enclosed rear garden, garage
- Spacious lounge and separate kitchen/diner